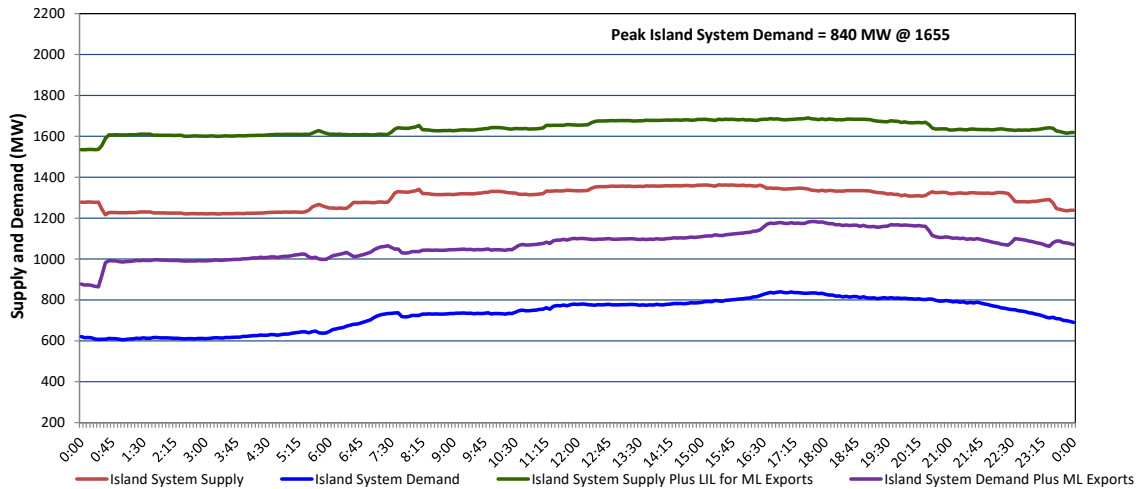


Newfoundland Labrador Hydro (NLH) Supply and Demand Status Report Filed Tuesday, June 23, 2026

Section 1 Island Interconnected System - Supply, Demand & Exports Actual 24 Hour System Performance For Friday, June 19, 2026



Island Supply Notes For June 19, 2026

- A As of 1326 hours, February 05, 2026, Cat Arm Unit 2 available at 57 MW due to forced derating (67 MW).
- B As of 0800 hours, March 29, 2026, Holyrood Unit 3 unavailable due to planned outage (150 MW).
- C As of 1513 hours, April 16, 2026, St. Anthony Diesel Plant available at 7.7 MW due to forced derating (9.7 MW).
- D As of 0800 hours, May 06, 2026, Holyrood Unit 2 unavailable due to planned outage 40 MW (170 MW).
- E As of 0701 hours, May 24, 2026, Holyrood Unit 1 unavailable due to planned outage 166 MW (170 MW).
- F As of 0841 hours, May 24, 2026, Hinds Lake Unit unavailable due to planned outage (75 MW).
- G As of 1700 hours, June 12, 2026, Bay d'Espoir Unit 2 unavailable due to forced extension to planned outage (76.5 MW).
- H As of 0834 hours, June 15, 2026, Bay d'Espoir Unit 3 unavailable due to planned outage (76.5 MW).
- I As of 0834 hours, June 15, 2026, Bay d'Espoir Unit 4 unavailable due to planned outage (76.5 MW).

Section 2 Island Interconnected System - Supply, Demand & Outlook

Sat, Jun 20, 2026	Island System Outlook ²	Seven-Day Forecast	Island System Daily Peak Demand (MW)	
			Forecast ⁸	Adjusted ⁶
Island System Supply: ⁴	1,263 MW	Saturday, June 20, 2026	790	755
NLH Island Generation: ^{3,7}	885 MW	Sunday, June 21, 2026	805	770
NLH Island Power Purchases: ⁵	95 MW	Monday, June 22, 2026	870	835
NP and CBPP Owned Generation:	210 MW	Tuesday, June 23, 2026	805	770
LIL/ML Net Imports to Island: ⁹	73 MW	Wednesday, June 24, 2026	795	760
		Thursday, June 25, 2026	790	755
7-Day Island Peak Demand Forecast:	870 MW	Friday, June 26, 2026	825	790

Island Supply Notes For June 20, 2026

- Notes:
1. Generation outages for running and corrective maintenance are included. These are not unusual for power system operations. They generally do not impact customer supply. Hydro schedules outages to system equipment whenever possible to coincide with periods when customer demands are low and sufficient supply reserves are available. However, from time to time equipment outages are necessary and reserves may be impacted.
 2. As of 0800 Hours.
 3. Gross continuous unit output.
 4. Gross output from all Island sources (including Note 3).
 5. NLH Island Power Purchases include: ML Imports, Exploits Generation, Rattle Brook, Star Lake, Wind Generation and capacity assistance (when applicable).
 6. Adjusted for interruptible load and the impact of voltage reduction when applicable.
 7. Due to limitations inherent in the design of combustion turbines, the output of combustion turbines may be reduced in the event that ambient temperatures exceed the threshold required for full rated output. This threshold is dependent on the design of each turbine.
 8. Does not include ML Exports.
 9. LIL Import sunk in the Island System. Actual LIL flows will be restricted by various system conditions including, but not limited to, Island Load, ML Exports and Avalon Unit status.

Section 3 Island Peak Demand and Exports Information Previous Day Actual Peak and Current Day Forecast Peak

Fri, Jun 19, 2026	Island Peak Demand ¹⁰	16:55	840 MW
	Exports at Peak		339 MW
	LIL Net Imports to Island		3,399 MWh
Sat, Jun 20, 2026	Forecast Island Peak Demand		790 MW

- Notes:
10. Island Demand is supplied by NLH generation and purchases, LIL Imports plus generation owned and operated by Newfoundland Power and Corner Brook Pulp & Paper (Deer Lake Power, DLP).